

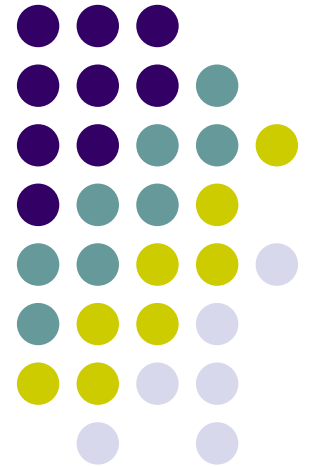
8 Years of Constructing Grand Pagoda

27th June 2000 to 16th November 2008

Height: 89.93 meter

Clear Span: 85.15 meter

Total Masonry: 76,500 cu. Meter
(1,92,000,000 Kg stone)





Ground Flat on
completion of
Foundation work!!

Mid - 2002



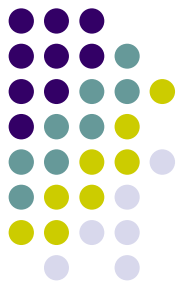


Aiming for the span, never thought before in stone masonry!!



Carving of stone!! Rigorous efforts put in by workers

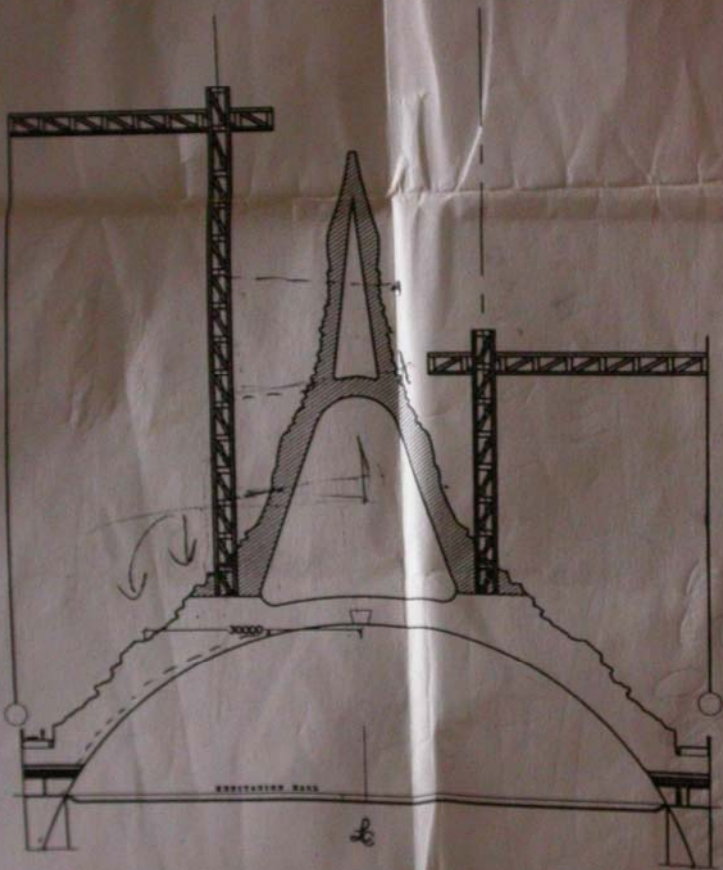
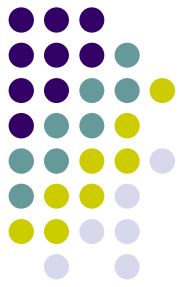
Nandadeep Building Center, Aurangabad



Without Centering, self supporting rings of masonry!!



Nandadeep Building Center



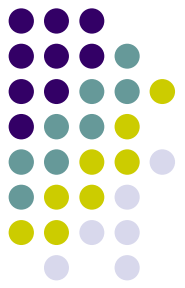
Long Discussion on construction methodology. What execution specialist feels about it?

Number of Trials, Economics!!
Feasibility!!

Will crane load be sustained by dome???
What the structural engineer says about it?



Work in progress without centering



Placing of crane over structure itself





Towards closing of 1st dome....



Fixing of Key stone for 1st dome, September 2006 – Completion of Masonry dome with clear span of 85.15 meter, largest ever in masonry



Sept 2006



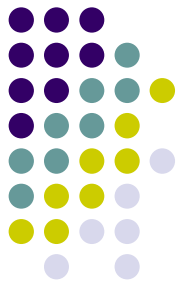
Year Marked with increase in speed with construction started for IInd dome and Auxiliary dome

September 2007





Nandadeep Building Center, Aurangabad



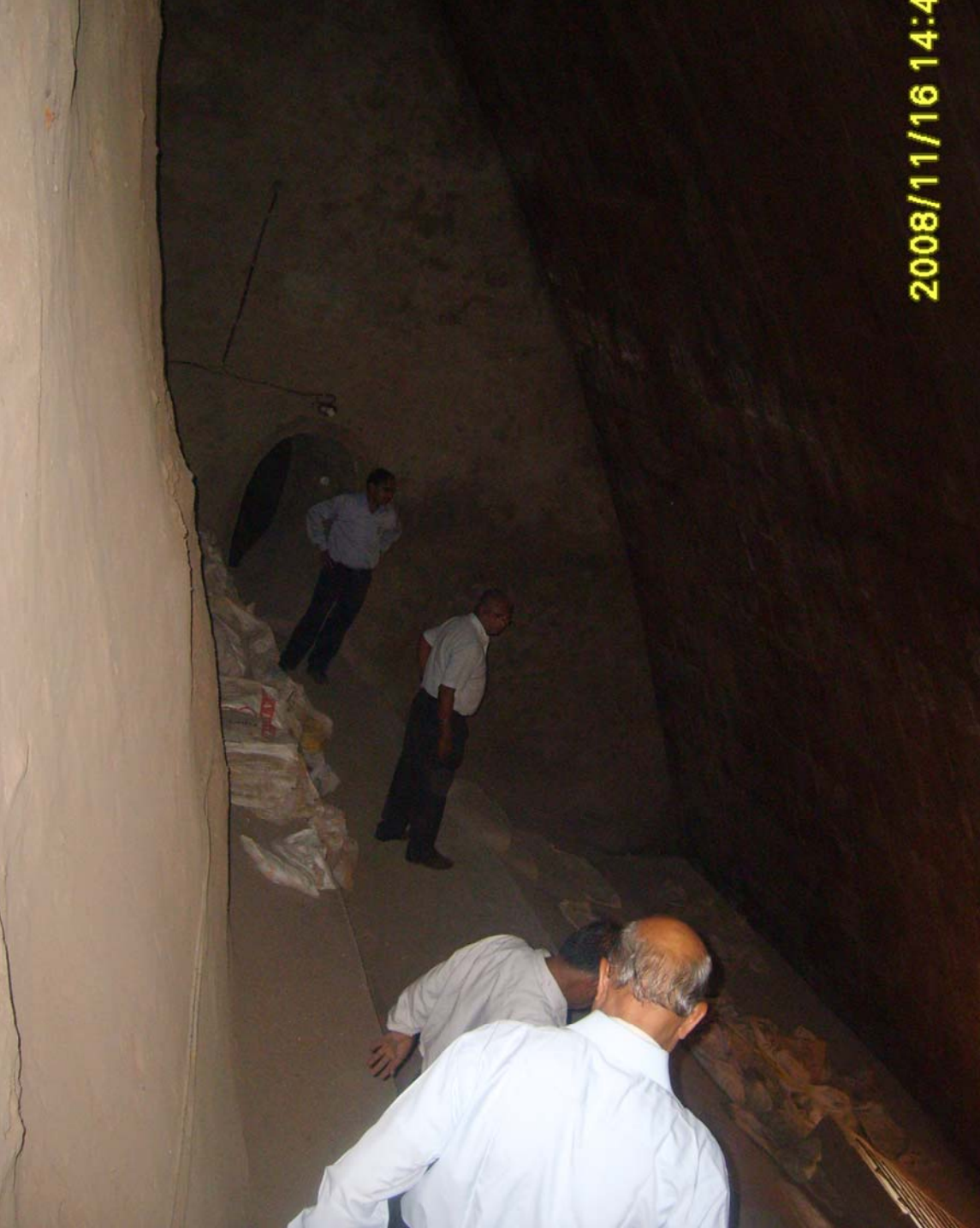




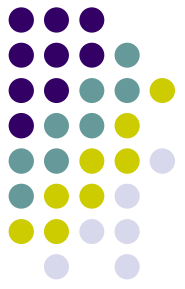
The day!! 16th November 2008.... We completed the construction of Grand Pagoda.... Fixing the final stone of Grand Pagoda



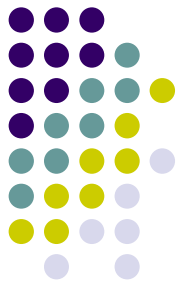
Pleasure of Fixing final Stone, Height 90 meter above ground



2008/11/16 14:4



Inside of Auxiliary Dome



Vital Support to Grand Structure



My camera is always short to capture complete span of 1st dome